

## **SIGNAL COLLECTION SERVER FOR TELECOMMUNICATIONS SIGNALS**

### **Key Features**

- **Flexible Input Choices**
  - E1/T1
  - E3/T3
  - STM-1
  - Analog
  - FDM Baseband
- **Remote Control via LAN**
- **Satellite and Terrestrial Link Analysis**
- **ISDN, SS7 and DCME capabilities**
- **Comprehensive Call Recording Capability**
  - **Signalling-based (CAS, R2, C5, SS7, ISDN)**
  - **VOX**
  - **Manual**
- **Recording of Voice Channels and SMS/MMS messages carried over SS7 links**
- **SS7 mapping analyzer**
- **E1/T1 Channel Pairing**
- **Extensive Call Log Database**
- **Expandable Storage Capacity**
  - **up to 20,000 channel-hours of uncompressed data**

TriaSys Technologies' Signal Collection Server (SCS) is a bulk signal collection and storage system that meets a host of customer requirements, such as performance, scalability, space optimization, maintainability, affordability and supportability.

The TriaSys SCS is based on commercially available Enterprise-class Linux servers with on board high-capacity storage. The SCS can be configured to use the on-board storage or even larger capacity storage attached to the SCS via LAN or SAS arrays.

The SCS's combination of on-board storage, extensive signal processing, and flexible input configurations make it suitable for a wide range of applications. The SCS is designed to support the following applications:

- Bulk Signal Collection
- Satellite and Terrestrial Link Surveys
- Store and Forward

The SCS is ideally suited for use in sustained collection of telecom signals providing an on-board database which supports extensive query capability from the SCS Client Software.

The SCS provides client access to collected signals via a standard LAN connection. Signals are stored on the SCS as standard WAV files in conjunction with a comprehensive call database built on the Enterprise version of MySQL.

The SCS's on-board database provides an extensive set of search criteria and operator analysis functions which are accessible via the SCS Client software.

Using the SCS client software, call recordings can be moved about the network to client workstations for further processing such as signal playback, modem/fax demodulation, data format conversion, and forwarding functions.

TriaSys' Signal Collection Servers can be integrated into custom solutions or combined with other TriaSys software products, to provide a complete "signal-to-analyst" solution.

## Model 3000 and 4000 Series Servers

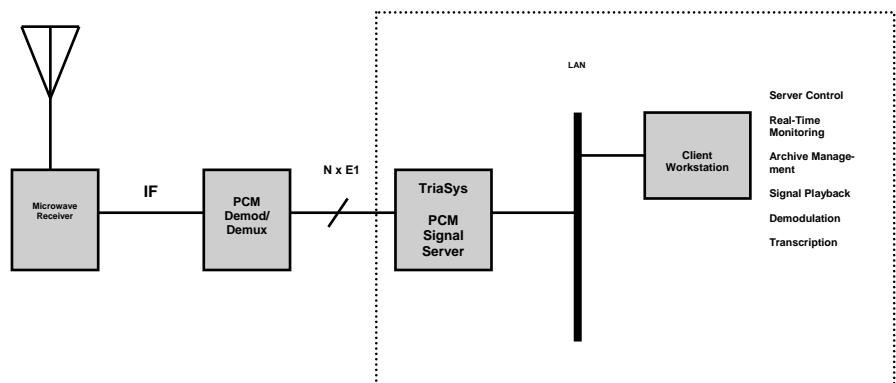
### Key Features

- Bulk Signal Collection
  - Voice
  - Modem
  - Fax
  - ISDN
  - SS7
  - DCME
- Standard Signal Inputs
  - E1/T1
  - E3/T3
  - STM-1
  - Analog
  - FDM Basebands
- Bulk Survey
  - Automatic signal identification on each input in real-time
- Bulk Signal Storage
- Store and Forward Applications
- GUI Client for SCS configuration, real-time monitoring, and call management

The TriaSys Signal Collection Servers (SCS) provide an affordable solution for bulk collection, storage and processing of signals. The servers are based on enterprise-class Linux servers with on-board high-capacity storage, providing an affordable and efficient solution based on commercially available components.

The modular nature of the TriaSys Signal Collection Server architecture allows customers to tailor their servers not only for the types of input required, but to configure other options including:

- External SRI inputs to allow signal cuts to be defined by other systems.
- Call recording/cut generation based on signaling or VOX.
- Custom output formatting to provide users with the ability to integrate TriaSys servers into their systems.
- Automatic forwarding and extraction capability using user-specified forwarding protocols.
- Automatic Daily (or user-defined) export of data to CD, DVD, DVD-DL or other external data storage device



*PCM Processing Example*

## TRIASYS TECHNOLOGIES CORPORATION

### SCS Control Client Software Package

The SCS Control Client is a java-based software package that provides complete control over the configuration and operation of the SCS.

Features of the client software include

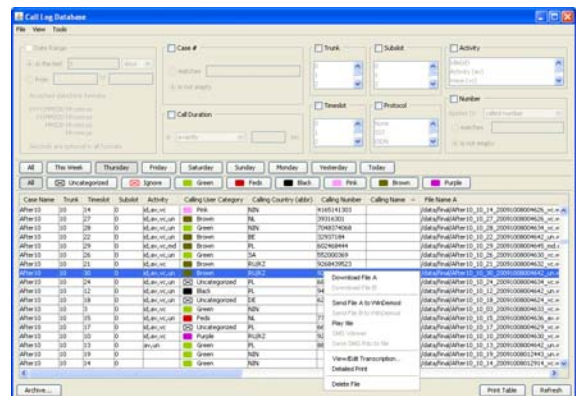
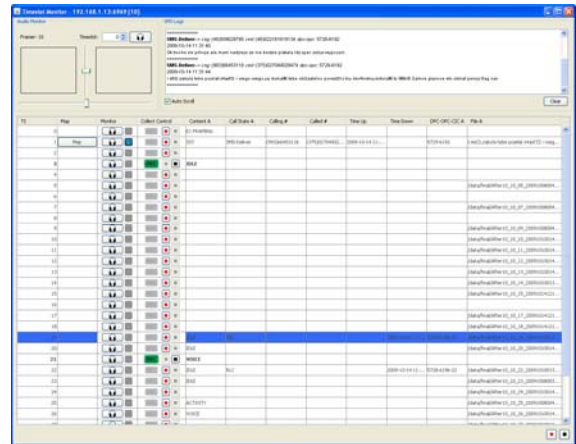
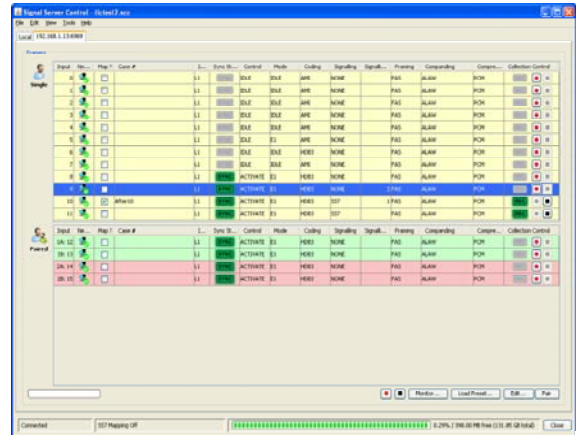
- Configuration of signal inputs
- Configuration of signaling formats (ISDN, CAS, R2, C5, SS7)
- Automatic SS7 link detection and analysis
- Automatic SS7 bearer channel mapping analysis
- E1/T1 Channel pairing capability
- Recording configuration (Signalling, VOX, manual)
- Real-time trunk monitoring
- Call log database viewing and management

### Real Time Monitor Features

- Real-time status monitoring of each individual timeslot
- Display of timeslot activity, call state and call numbers
- Display of recording state for each timeslot
- Real-time audio monitoring of timeslots (including paired channels) via streaming audio
- Live monitoring of SMS text messages

### File Playback and Management GUI

- Allows user management of collected files via collection database
- Allows user to sort calls by source, call or answer numbers, time of collection, etc.
- Audio playback of collected signals
- Stereo playback feature for paired channels with optional foot-pedal integration
- Transcription capability
- Batch FAX and modem demodulation via TriaSys WinDemod (optional)



## Capabilities

- E1/T1 channel pairing
- SS7 mapping analyzer
- Automatic call recording capability
- ADPCM (G.726) processing capability
- Real-time status monitoring of each individual channel
- Display of channel activity and call numbers
- Real-time audio monitoring of call and answer channel pair via streaming audio
- Call sorting
- Audio playback
- Stereo playback for paired signals
- Transcription utility
- Batch demodulation via WinDemod (*optional*)

## To Inquire or Order

For a demonstration, further information, or to contact a representative, please call 978.244.1060, or visit our website at [www.triasys.us](http://www.triasys.us).

## Model 3000

### Low Profile Signal Collection Server



#### Input Capacity

- Combine up to **two** of the following modules:
  - L1 PCM Module: 4 E1/T1 Streams (2 trunk pairs)
  - L3 PCM Module: 1 E3/T3 Input
  - STM-1 Module
  - Analog Module: 32 Analog inputs
  - FDM Card: 24 or 48 Independently Tuned VGCs

#### PCM Input Framing modes

- E1 (G.703/G.706/G.732, G.723)
- T1 (G.733, G.734, G.724)
- ISDN
- G.726 Compression modes

#### Signalling Modes

- ITU C4, C5, R1, R2, CAS, ISDN and SS7
- GSM A, A-bis, A-ter (optional)

#### Size and Power

- 1U rack-mountable
- Up to 20,000 channel-hours storage
- 110-220 VAC universal

## Model 4000

### Standard Capacity Signal Collection Server



#### Input Capacity

- Combine up to **three** of the following modules:
  - PCM Module: 4 E1/T1 Streams (2 trunk pairs)
  - L3 PCM Module: 1 E3/T3 Input
  - STM-1 Module
  - Analog Module: 32 Analog inputs
  - FDM Card: 24 or 48 Independently Tuned VGCs

#### PCM Input Framing modes

- E1 (G.703/G.706/G.732, G.723)
- T1 (G.733, G.734, G.724)
- ISDN
- G.726 Compression modes

#### Signalling Modes

- ITU C4, C5, R1, R2, CAS, ISDN and SS7
- GSM A, A-bis, A-ter (optional)

#### Size and Power

- 2U rack-mountable
- Up to 40,000 channel-hours storage
- 110-220 VAC universal